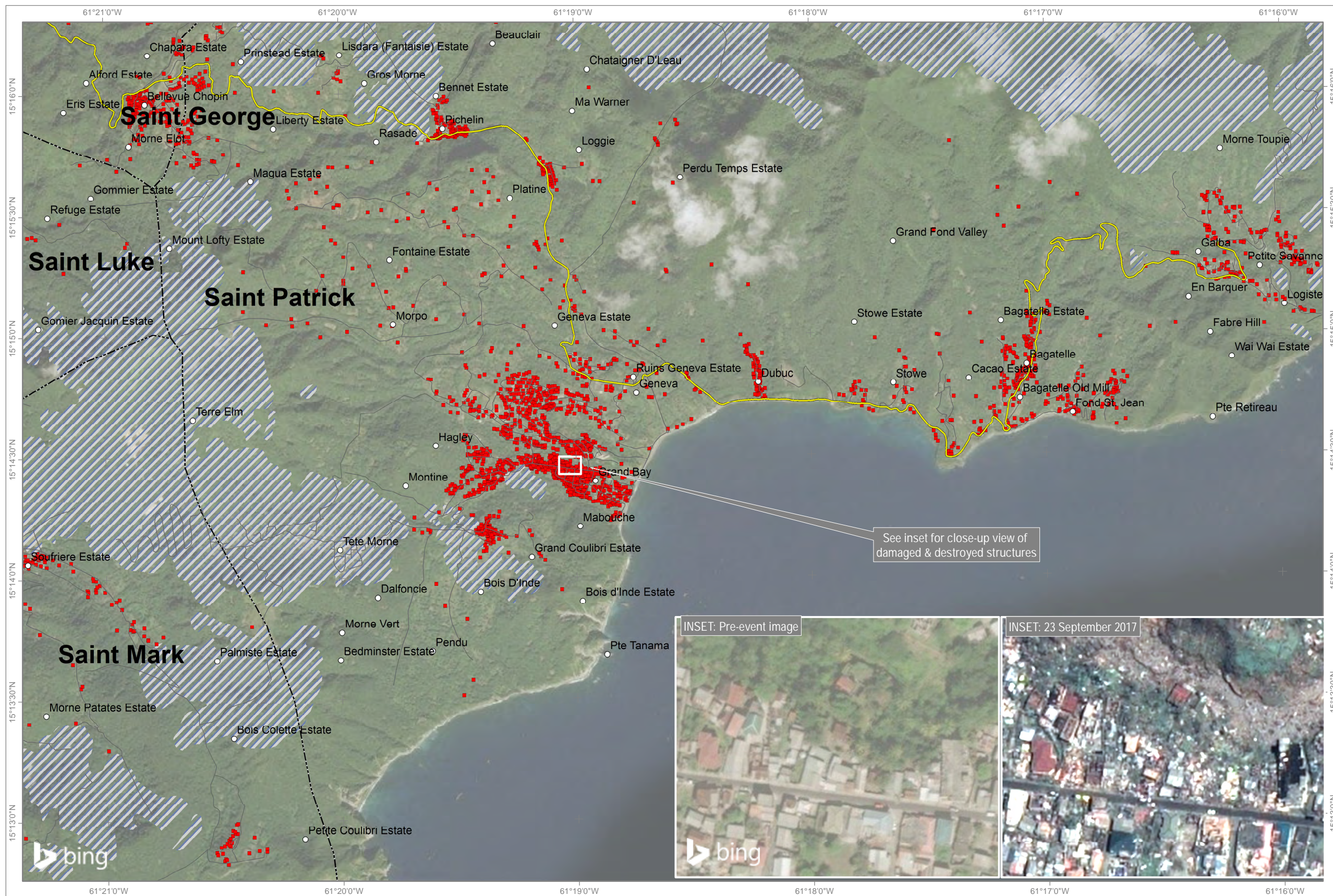




Damage Assessment in Southern Dominica

This map illustrates potentially damaged structures and buildings in Southern Dominica as detected by satellite image acquired after landfall of the Tropical Cyclone Maria-17 on 19 September 2017. UNITAR-UNOSAT analysis used a Pleiades image acquired on 23 September 2017 as post imagery. Within the extent of this map UNITAR-UNOSAT identified in the cloud free areas of southern Dominica 2482 potentially damaged structures. Taking into account the pre-building footprints provided by Humanitarian OpenStreetMap, this represent about 80 % of the total number of structures within the analysed area. This is a preliminary analysis and has not yet been validated in the field. Please send ground feedback to UNITAR-UNOSAT.



Legend

- Damaged structure
- Locality
- Primary road
- Local road
- ▭ Parish boundary
- ▨ Cloud obstruction

Map Scale for A3: 1:30,000



Analysis conducted with ArcGIS v10.4

Coordinate System: WGS 1984 UTM Zone 20N
Projection: Transverse Mercator
Datum: WGS 1984
Units: Meter

Satellite Data (Post): Pleiades
Imagery Date: 23 September 2017
Resolution: 50 cm
Copyright: CNES 2017, Distribution Airbus Defence and Space
Source: Airbus Defence and Space
Satellite Data (Pre): Bing

Imagery Date: 25 November 2013
Source: Microsoft
Baseline Data: Humanitarian OpenStreet Maps (21/09/2017)
Analysis: UNITAR - UNOSAT
Production: UNITAR - UNOSAT



The depiction and use of boundaries, geographic names and related data shown here are not warranted to be error-free nor do they imply official endorsement or acceptance by the United Nations. UNOSAT is a program of the United Nations Institute for Training and Research (UNITAR), providing satellite imagery and related geographic information, research and analysis to UN humanitarian & development agencies & their implementing partners. This work by UNITAR-UNOSAT is licensed under a CC BY-NC 3.0